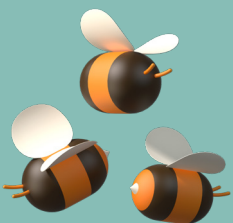




Welcome to

BETTER LAND

A blockchain project for a better world.
Efficient, reliable and possible.

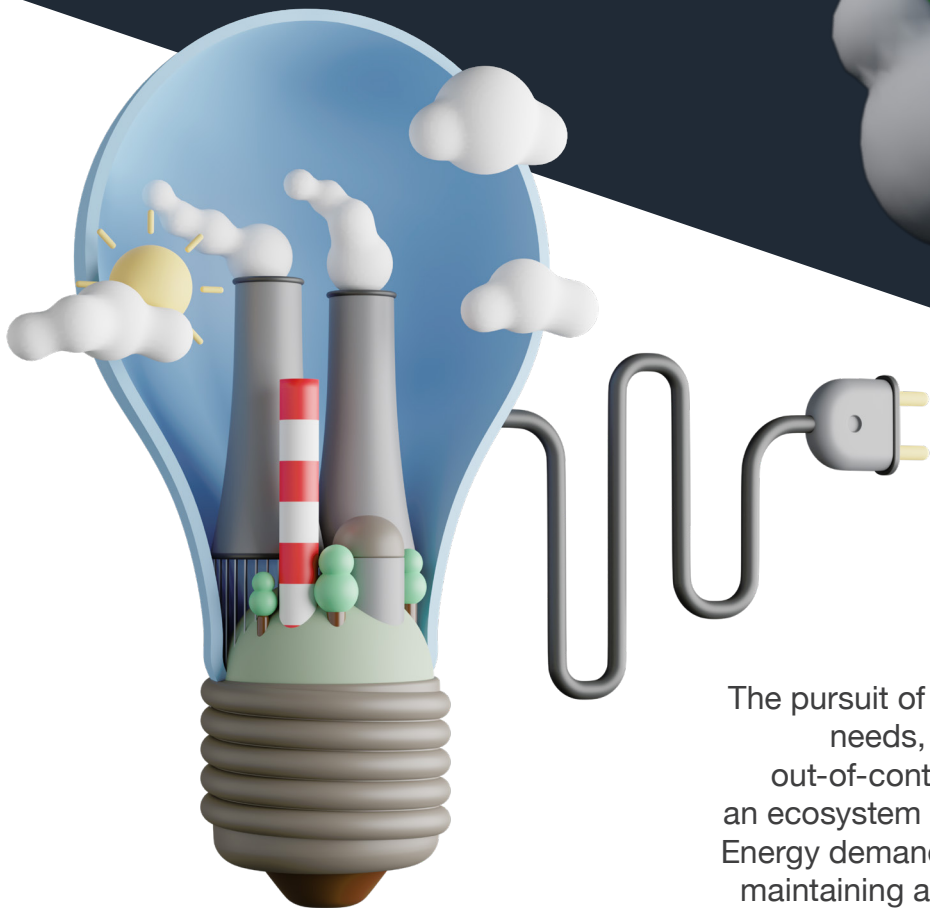


Chapters

- #1_ FUNDAMENTALS OF THOUGHT**
- #2_ HISTORY OF THE PROJECT**
- #3_ THE PROJECT**
- #4_ A NON-INVERTIBLE WORLD**
- #5_ EXAMPLES AND VERTICALITY**
- #6_ BETTERLAND'S FRONT END**
- #7_ ARCHITECTURE OF THE PROJECT**
- #8_ USER EXPERIENCE**
- #9_ PROFITABILITY**
- #10_ PRE-SALE, PRIVATE SALE AND PUBLIC SALE**
- #11_ COMMUNICATION**

Fundamentals of Thought

BETTERLAND IS A STRUCTURED PROJECT TO REDUCE LARGE QUANTITIES OF CO² RELEASED INTO THE ATMOSPHERE THROUGH THE CONSTRUCTION OF LARGE PRODUCTION PLANTS OF ENERGY FROM RENEWABLE SOURCES.



The pursuit of satisfaction of increasingly numerous needs, together with a world population with out-of-control demographic growth, has brought an ecosystem as strong as it is delicate to the brink. Energy demand meets an offer that has grown while maintaining an adequate balance, without however evolving in a sustainable and technological way.

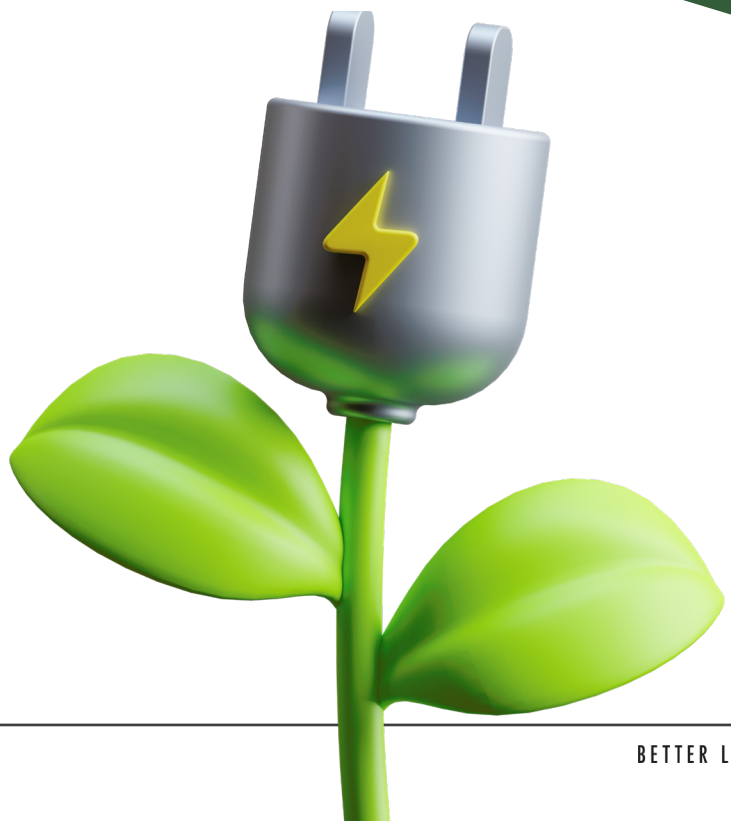
Fundamentals of Thought

THE SOLUTIONS FOUND BY THE GREAT WORLD POWERS TO STOP THE EMERGENCY ARE IN MANY CASES VALID, BUT NOT VERY EFFECTIVE, ESPECIALLY DUE TO THE VERY LOW COHESION BETWEEN THE VARIOUS COUNTRIES.



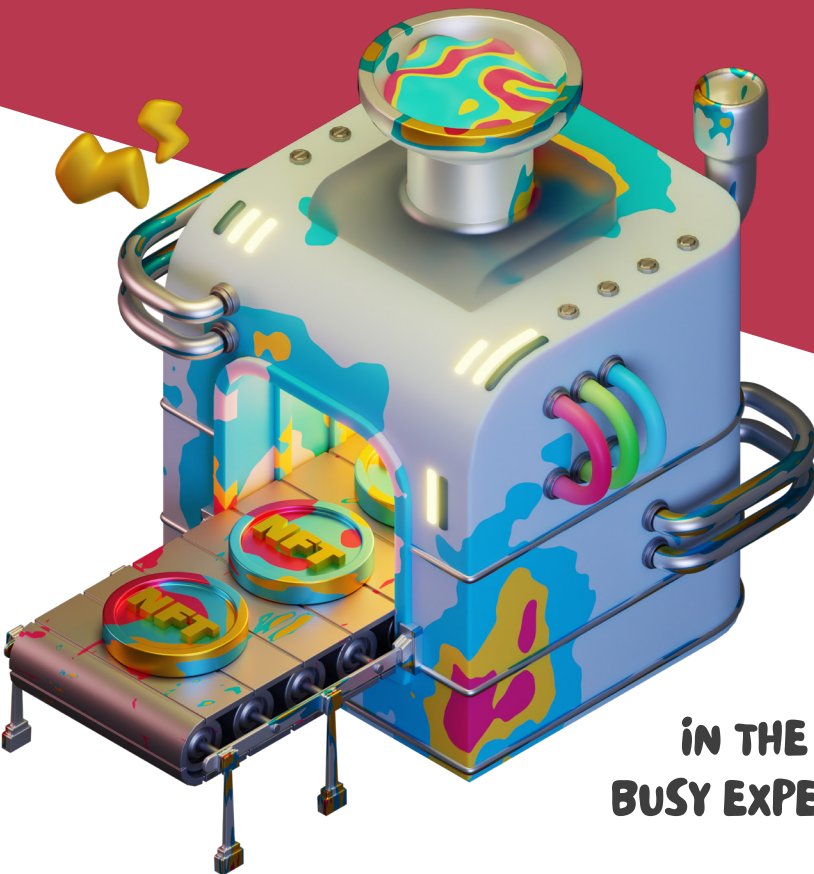
We recognize, in our opinion, that the only system to combat pollution caused by the demand for goods and services is the creation of a structured energy production system to also become a remunerative tool for the community.

Betterland is a self-sustaining mechanism by remunerating citizens on the basis of their investments in the creation of renewable energy sources.



History of the project

BetterLand is born from multiple embryos that have developed through direct experiences of the team in various economic and technological sectors. The joint experiences have led to the skills necessary for the drafting of this document and the birth of BetterLand in its current form.



IN THE LAST 5 YEARS WE HAVE BEEN BUSY EXPERIMENTING WITH BLOCKCHAIN ENVIRONMENTS, DEVELOPING DIFFERENT CRYPTOCOINS, WEB3 DAPPS AND NFT PROJECTS BOTH IN THE CORPORATE AND PRIVATE FIELDS.

History of the project

A large part of our team has been dealing with renewable energy for 20 years and together we have already built more than 5000 photovoltaic systems, for a total production of about 18 Megawatts of power from sustainable sources.



**IN TERMS OF CO2
NOT EMITTED INTO
THE ATMOSPHERE WE
ARE TALKING ABOUT
7 MILLION KILOGRAMS,
APPROXIMATED
BY DEFAULT.**

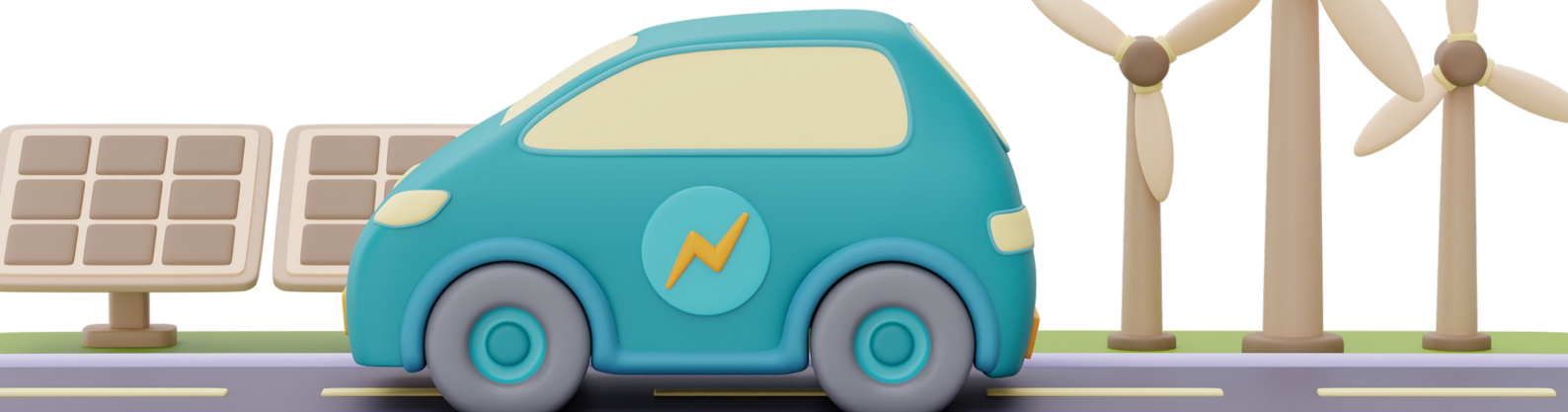


Green Triumph

These numbers reflect a potential that can be raised to power with centralized interventions, which combine a large number of smaller plants to create large spaces dedicated to the production of energy from renewable sources.

The project

BETTERLAND WAS BORN WITH THE AIM OF CREATING PRODUCTIVE NODES WITH POWERS FROM 50KW UP TO SEVERAL MEGAWATTS.



EACH NODE IS OPEN TO THE PUBLIC WHO CAN PARTICIPATE IN ITS CREATION WITH QUOTAS, WHICH IN THE FUTURE WILL REFLECT THE PRODUCTION OF RENEWABLE ENERGY FOR EACH PARTICIPANT AND THE AMOUNT IN CO2 SAVED.



Once the financing of each single NODE has been completed, BetterLand will take care of the implementation of the project, its connection to the production network and also the sale of the energy produced.

BETTER LAND

A non-invertible world

We wanted to insert this point to underline how unlikely it is for us that the great powers of the world will find a solution to limit polluting. Curbing pollution means having to give up privileges, goods and services that No one is ready to let go of.



WE HAVE CREATED A WORLD WHERE THE FEELING OF GLOBALIZATION HAS TURNED INTO A NEW RULE OF LAW, WHERE EVERYONE IS DEMANDING MORE AND MORE.

While knowing that we have no power to control the needs of the human population, we strongly want to commit ourselves to creating the largest mechanism of energy production from renewable sources that history has ever seen.



Examples and verticality

The applicability of the BetterLand model is very broad indeed. Each NODE can be developed through several basic technologies:



**SOLAR ENERGY
PRODUCTION PLANTS**



**WIND ENERGY
PRODUCTION PLANTS**



**HYDROELECTRIC POWER
PRODUCTION PLANTS**



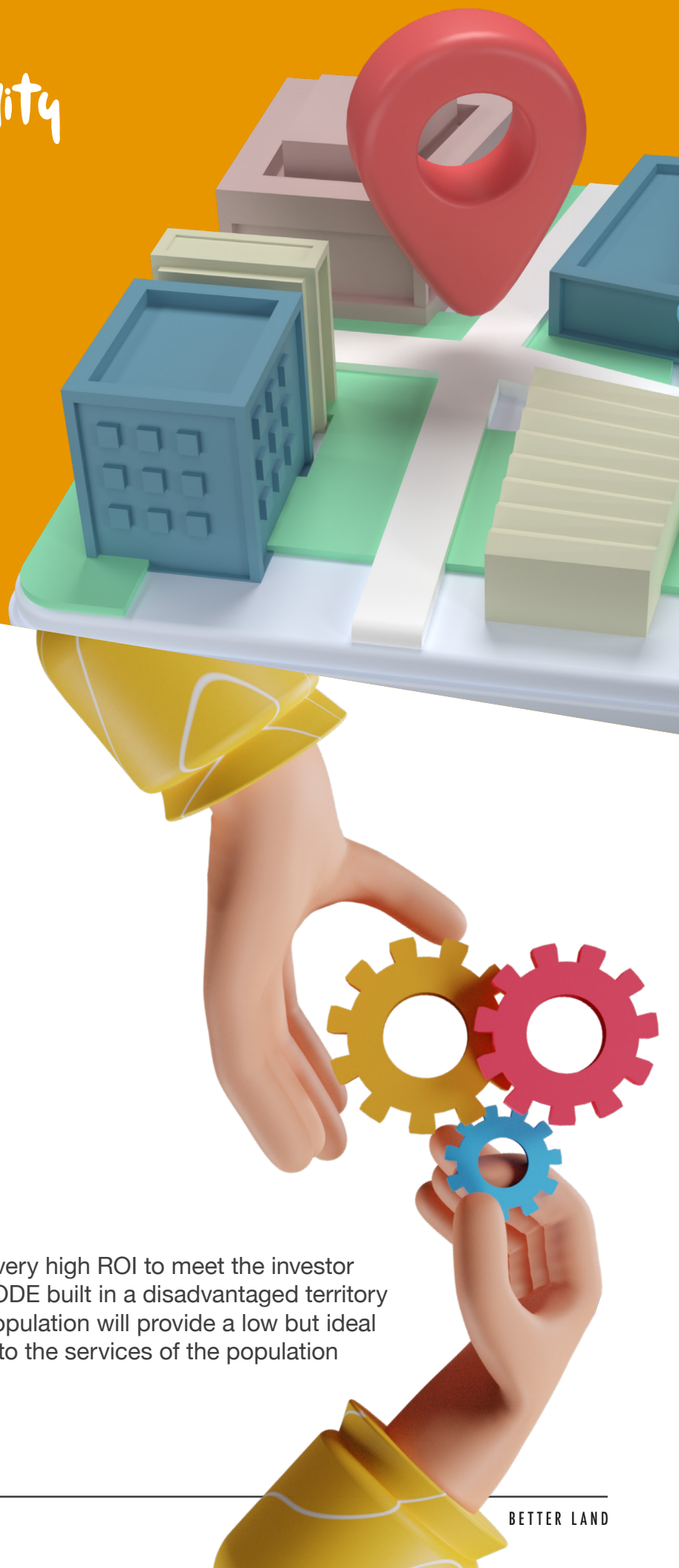
**GEOHERMAL ENERGY
PRODUCTION PLANTS**



**REFORESTATION
PROJECTS
FOR THE CREATION
OF GREEN LUNGS**

Examples and verticality

In addition to the technologies and the basic function, the territoriality of the plant can play a key role based on the infrastructure of the area and the territory where it is built.



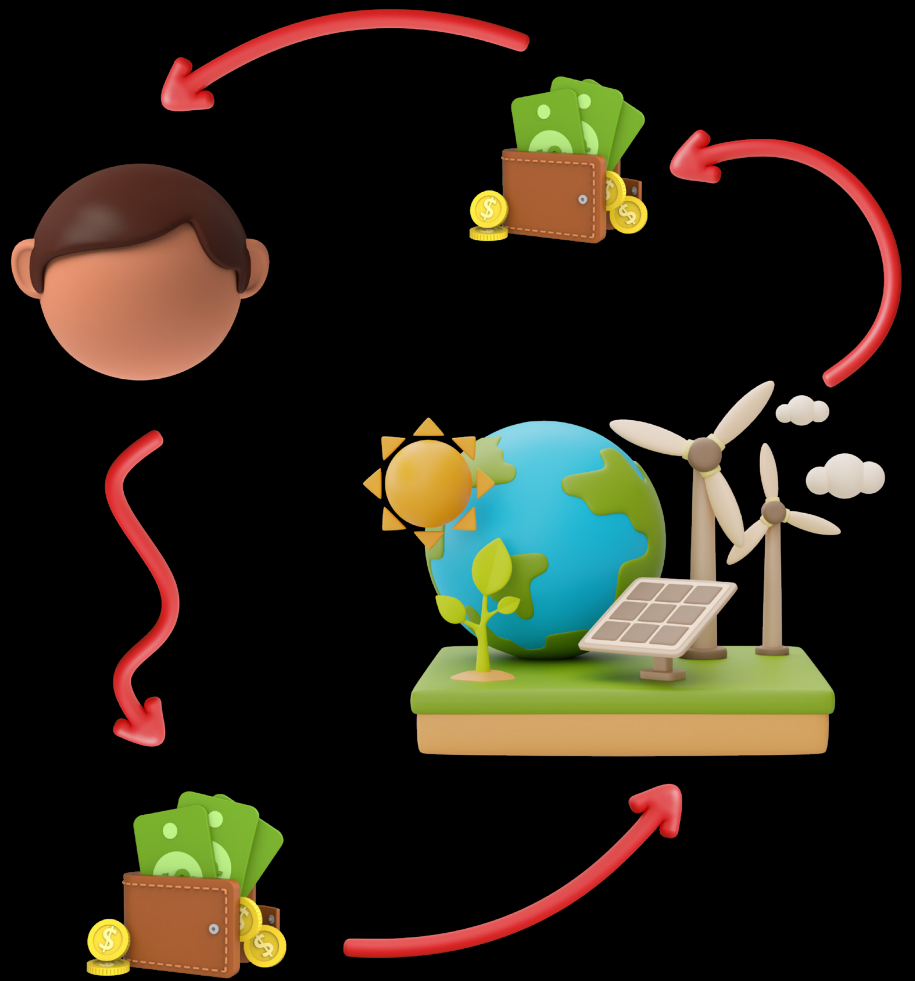
To meet any form of investment, the NODES will be characterized as follows:

- NODE NAME;**
- TECHNOLOGY USED;**
- GEOLOCATION;**
- SPECIFIC ROI;**
- SERVICES TO THE TERRITORY;**

The NODE built in Europe will provide a very high ROI to meet the investor more attentive to its margin, while the NODE built in a disadvantaged territory with various services designed for the population will provide a low but ideal ROI for those who care about it. access to the services of the population affected by the intervention.

Examples and verticality

By investing in different NODES, the user will be able to create his perfect mix by always keeping under control how much energy his systems produce, how much CO² is not emitted into the atmosphere thanks to him and, obviously, the return on his investment.

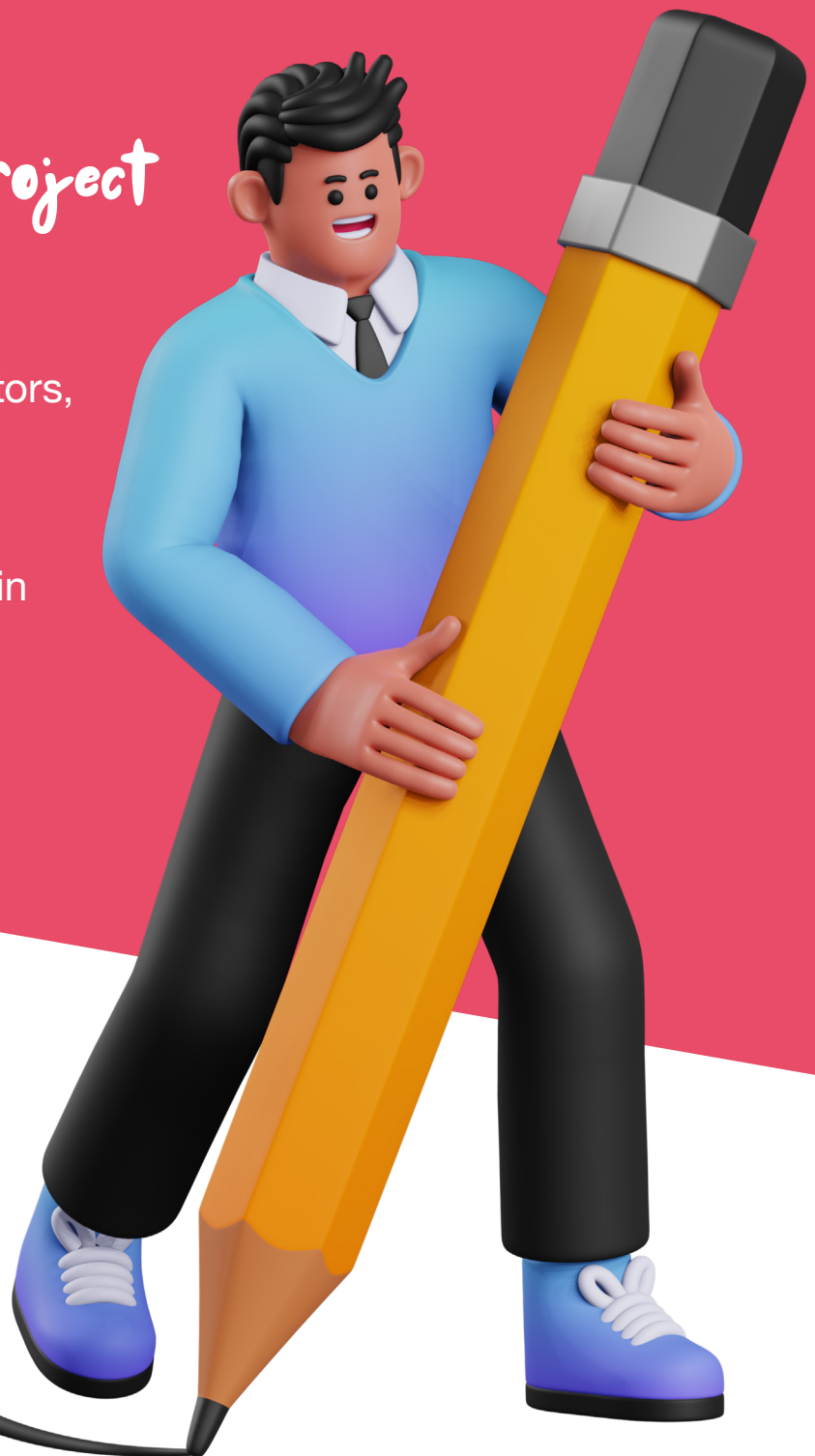


Betterland can be developed vertically in many areas. It is possible to make small towns and neighborhoods autonomous, but also to make a company or industry ZERO-CO² as well as to supply energy at a fair price to disadvantaged territories.

IT WOULD ALSO BE POSSIBLE TO BUILD A PLANT SO LARGE THAT IT WOULD SUPPLANT A NEARBY COAL-FIRED POWER PLANT AND HAVE IT CLOSED FOREVER, ONLY THANKS TO THE COMMUNITY.

Architecture of The project

The development of BetterLand includes various operational sectors, on-chain and off-chain, based on a Node.js infrastructure that allows the server-side Javascript to communicate with the off-chain database and use the Front-End data aggregate via PHP 7.



The centralized structure of the server will be connected to the energy systems and user data, while the decentralized part will base its infrastructure on Blockchain Tezos.

On day zero of the project, our proprietary cryptocurrency with a total supply of 2 billion tokens will be issued, which will be called:



\$BetterCoin (\$ BTLC)

BETTER LAND

\$BetterCoin

\$BetterCoin will serve as revenue for all participants in NODES, according to the criteria applied to the following example:



USER INVESTMENT

of \$ 10,000 to finance 10% of a NODE which in this hypothetical example would require a total investment of \$ 100,000 to be built;



IMMEDIATE REVENUE

to the user of 8.000\$ converted into \$BetterCoin according to the instant market value;



REVENUE DEFERRED

to the user for 20 years on 50% of his share of the energy production of the participated NODE with \$ BetterCoin

***THE REMAINING 50% OF PRODUCTION WILL REMAIN IN THE BETTERLAND INFRASTRUCTURE**

Operation examples



NODE

\$ 100.000 USD



PLANT POWER

70 KWh



ANNUAL PLANT REVENUE

\$ 28.000 USD



NODE SHARE FOR USER

0,1% of the capital



USER

\$ 100 USD



USER INVESTMENT

\$ 100 USD



USER REVENUE [Day 0]

80% in \$BTLC



USER REVENUE [EACH YEAR]

1/2 of his node share
0,05% in \$BTLC



TOTAL REVENUE [Day 0]

[Day 0] \$ 80 USD - [Deferred] \$ 280 USD



USER ANNUAL REVENUE

\$ 14 USD



REVENUE [OVER 20 years]

\$ 280 USD



EXTRA REVENUE

Quotation of \$BTLC
(with possible capital gain)

\$ BTLC Support



BURN EVERY MOUNTH



LIQUIDITY POOL CREATION

WITH DIFFERENT PAIRS UP TO 250.000 \$ in the first year

BetterLand's Front End

The main functions of the frontend are as follows



**PRESENTATION
OF THE PROJECT
TO THE USERS**



**REGISTRATION
OF ALL USERS**



**LIST OF NODES IN THE
PROJECT AND THEIR
CHARACTERISTICS**



BETTER LAND



EXPLORER OF THE NODES
ALREADY DEVELOPED WITH
PRODUCTION TRACKING



RESERVED AREA
FOR THE USER



CRYPTOCURRENCY
PURCHASE AREA AND AND
PARTICIPATION IN NODES

COUNTER OF ALL
THE ENERGY PRODUCED
BY BETTERLAND



BETTER LAND



COUNTER OF ALL CO2 NOT
EMITTED INTO THE ATMOSPHERE
THANKS TO BETTERLAND



LINK TO WHITEPAPER,
ETHERSCAN, CONTRACT AND
\$ TEZOS LISTING AFTER LISTING



A VERY IMPORTANT NOTE IS THE
POSSIBILITY FOR THE USER TO
PARTICIPATE IN PROJECTS BOTH
ON CHAIN AND VIA THE WEB.
REGISTRATION ON THE PLATFORM
IS POSSIBLE BOTH VIA WALLET
AND TRADITIONAL SIGN-IN.

THE SAME POSSIBILITY WILL BE OFFERED FOR PARTICIPATION IN THE NODES: THE USER WILL BE FREE TO MAKE PAYMENTS BY CREDIT CARD, BANK TRANSFER OR TEZOS CRYPTOCURRENCY. REVENUES WILL INSTEAD ALWAYS BE PAID THROUGH \$ BTLC.



User Experience

The user's reserved area has very important features that enter the heart of the project, once again underlining the Mission.



Based on the amount of personal information entered by the user, BettedLand will be able to calculate with good precision the amount of CO² released into the atmosphere in a year by that specific user. Based on his participation in the NODES,

HE CAN BECOME A ZERO-CO² USER

AS AN EXTRA FOR HIS PARTICIPATION IN THE NODES, THE USER WILL ALSO CUMULATIVELY RECEIVE:



**PARTICIPATION FROM
\$ 1 TO \$ 100:**

Unique QR Code for tracking your system;



**PARTICIPATION FROM
\$ 100 TO \$ 1000:**

NFT relating to the participated NODE, issued with limited editions to participants in the single plant (BlockChain Tezos);



**PARTICIPATION FROM
\$ 1000 TO \$ 5000:**

Physical injection-molded badge in 100% recycled material, containing an NFC tracking tag of your facility;

User Experience

The participation fee of the single user in each NODE is limited to 5%, in order to make it possible for as many users to access the NODE. Thanks to this mechanism, at least 20 users will be required to create a single system.



The user can:



**CONSTANTLY
MONITOR THE
FUNDED NODES**



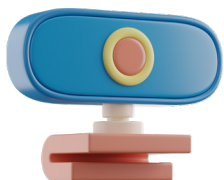
**CHECK THE
INSTANTANEOUS
POWER**



**FOLLOW THE
PRODUCTION
TRACKING**



**FOLLOW THE
CUMULATIVE
REVENUE**



**SEE THE PLANT
ALREADY FROM THE
CONSTRUCTION SITE
PHASE THROUGH
SPECIAL WEBCAMS**



Through the incorporation of an exchange, the user will be able to convert their cryptocurrencies (including Cross-Chain) into other assets and the Fiat currency transformed into \$ BTLC from the Front End.

Profitability

The typical source of profitability of each NODE is generated by the supply of electricity to third parties.



A separate economic study will be carried out for each NODE, in order to generate a specific NODE BUDGET according to the following parameters:



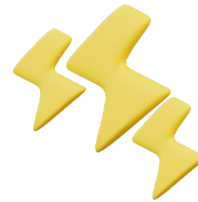
TYPE OF PLANT



GEOGRAPHICAL EXPOSURE AND EXPECTED PRODUCTION



GUARANTEED PRODUCTION TIME RANGE



TYPE OF ENERGY SALE



ROI MONTHLY, YEARLY AND UP TO THE END OF THE PLANT'S LIFE

5% of the financing amount of the single NODE will be set aside to guarantee an ECO-FRIENDLY and ZERO-CO2 disposal of the panels at the end of their life.



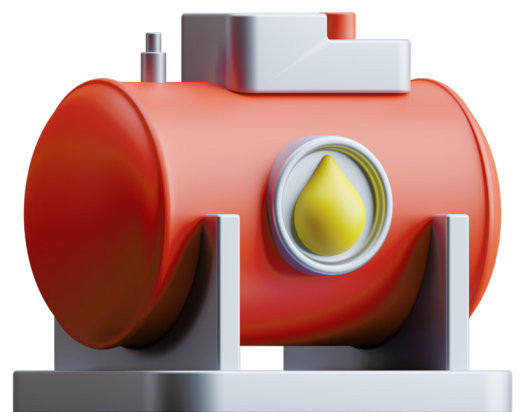
BETTER LAND

Profitability

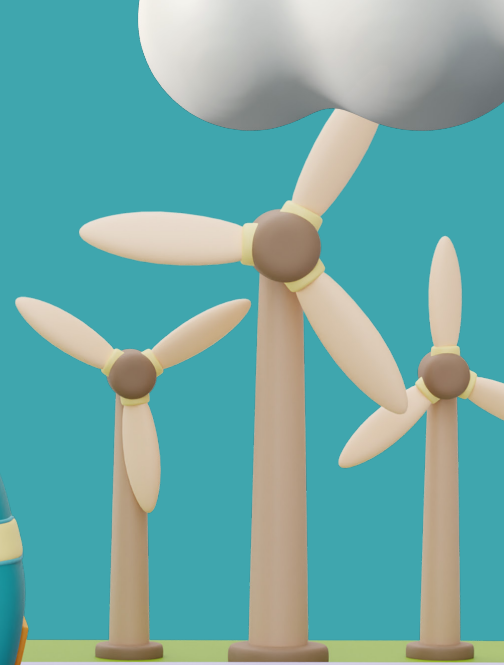
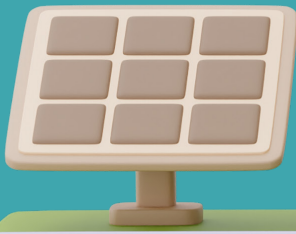
The plants will be built near or above particularly energy-intensive industries, guaranteeing them a drastic reduction of the CO2 released into the atmosphere. The new European regulations provide for the transfer of excess electricity to other users within the energy community, resulting in: the efficiency of nearby businesses / homes and the provision by the EU of grants.



THIS STRATEGY WILL HELP TO SIGNIFICANTLY SHORTEN THE RETURN ON INVESTMENT AND SIGNIFICANTLY REDUCE THE DEMAND FOR ENERGY SUPPLIES FROM FOSSIL FUELS.



Profitability Example



Numerical example of photovoltaic system.
(No Energy Community)

NAME:

ALFA NODE

ENERGY RESALE PRICE:

\$ 0.12 / kW

TECHNOLOGY:

PHOTOVOLTAIC

INVESTOR SHARING:

\$ 12,000 (per year)

GEOGRAPHIC AREA:

ROME

INVESTOR FEE AT 1%:

(initial entry \$ 800): \$ 120

FINANCIAL TARGET:

\$ 80.000

INVESTOR ROI:

100% IMMEDIATE
+ 15% PER YEAR
+ CAPITAL GAIN \$ BTLC

SYSTEM POWER:

70 KW

ANNUAL PRODUCTION:

100.000 kWh

CO2 NOT EMITTED:

48,000 kilograms (per year)

Profitability

The strategies for maintaining the market value of \$ BTLC are diversified. For each closed NODE there will be a Burn and a relative addition to the liquidity pools, created during the launch phase on different pairs of coins.

The liquidity pools will guarantee a constant growth in the demand for money with a corresponding increase in the volumes of currency, while the planned Burns will serve to maintain a value within any reasonable fluctuation.



Even if we do not sell \$ BTLC on the market, we will be able to maintain a very substantial reserve supply to compensate for any market declines to protect NODES participants. The listing of BetterLand on the market is expected after the realization of the first NODE.

THE TEAM'S GOAL IS TO REACH A VALUE CLOSE TO \$ 1 FOR EVERY \$ BTLC.



Pre-Sale, Private Sale and Public Sale



Pre-Sale



Accessible to 1000 Whitelist participants;



It will guarantee priority access to Node Zero;



Instant ROI 130% in \$ BTLC;



60% annual ROI on your participation fee;



Airdrop NFT Better Land #1 limited to 1000 editions.

Private-Sale



Accessible in the 2 weeks prior to the launch of BetterLand;



Residual access to Node Zero, access to Node One, two and three;



Instant ROI 115% in \$ BLTC;



55% annual ROI on your participation fee.

Public-Sale



Accessible to all;



Residual access to Nodes after launch;



Instant 100% ROI in \$ BTLC;



50% annual ROI on your participation fee.

Communication

The communication strategies will be both multimedia and traditional. Two resources of our team will take care of the construction and management of social platforms, while a third figure will be involved in press communication and event management.



Online communication

The channels planned to develop our communication are the following:



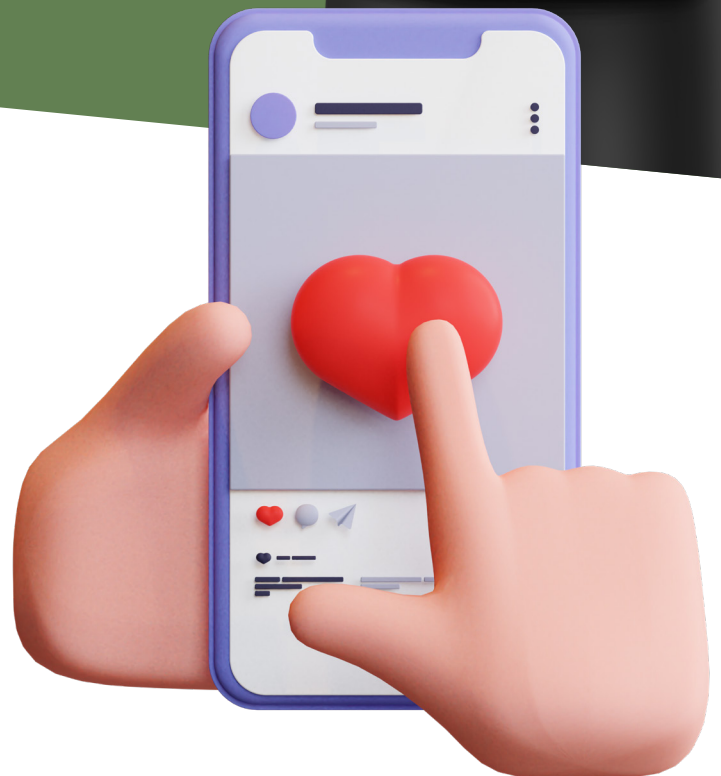
DISCORD



GITHUB



TWITTER



Each channel will be very important, since the BetterLand project is accessible to everyone and can be financed with both cryptocurrency and Fiat, our target audience is practically the entire world population. Access to the \$ 1 NODES allows anyone to access BetterLand.

BETTER LAND



DiScORd

The Discord Server will allow the strengthening of the Community and is dedicated to all Web3 visitors, along with Twitter.



GiTHUB

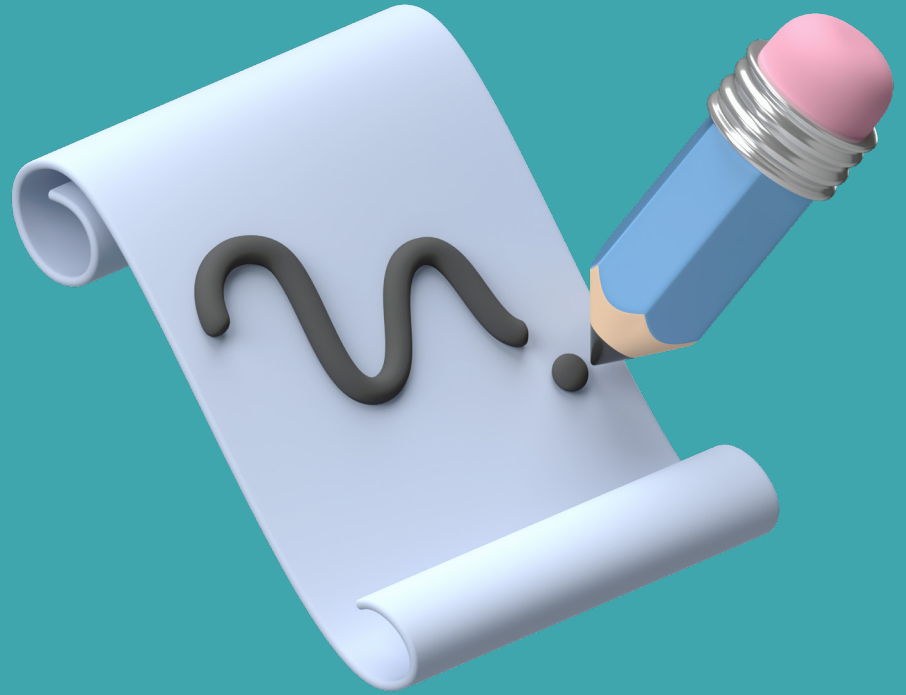
Our GitHub profile includes several APIs that will allow node participants to externally develop connection of their devices to production plants. An example is the programmer who will decide to use his display based on a board such as Arduino or Raspberry, to monitor the production of his plant quota.



BETTER LAND

Traditional communication

Our press officer will take care of writing articles for newspapers and promoting the principles of our project.



Six-monthly publications of a limited edition volume created by us are planned, which tell the story of the project and the paths of realization of the systems.

**TWO PUBLIC EVENTS
EACH YEAR IS SCHEDULED.**

